

# BACHELOR OF SCIENCE in PSYCHOLOGY

"HE GIVES STRENGTH TO THE WEARY AND INCREASES THE POWER OF THE WEAK. EVEN YOUTHS GROW TIRED AND WEARY, AND YOUNG MEN STUMBLE AND FALL; BUT THOSE WHO HOPE IN THE LORD WILL RENEW THEIR STRENGTH. THEY WILL SOAR ON WINGS LIKE EAGLES; THEY WILL RUN AND NOT GROW WEARY, THEY WILL WALK AND NOT BE FAINT." - ISAIAH 40:29-31

CCU's psychology degree provides students with a comprehensive understanding of the foundational theories of human nature, explored from a Christian worldview, and challenges students to integrate faith and the study of human behavior in a scholarly environment that fosters critical and creative thinking. In addition to personal growth and professional training, students are prepared for graduate work in the fields of psychology and counseling. This degree also academically prepares graduates to apply for admission into the Master of Arts in Counseling program at CCU.

## THIS DEGREE IS FOR YOU IF:

- You're looking for a career change after being out of the workforce.
- You want to advance in your current position, but don't have the necessary degree.
- You're currently working and want to update your knowledge base.

## WHY YOU WANT TO CHOOSE CCU

**You have the opportunity to learn with a biblical worldview.** CCU offers a complete education designed to develop you intellectually, professionally, and spiritually.

**Your life before CCU can work to your benefit.** Students may earn credits toward their degrees through examination, prior military service, and other personal and professional life experiences.

**You can attend a program designed for the adult learner.** A combination of online instruction and Web-enhanced, in-seat courses gives you greater flexibility to complete assignments while honoring important family and work commitments. We also recognize your work experience as a valuable contribution to online discussions and assignments.

**You matter as a person at CCU.** You'll receive personal attention from faculty and staff who want to know you as an individual and help you reach your goals.

**Your experience will be reinforced with an emphasis on personal and professional ethics.** You will explore philosophy, theories, and values as the basis for ethical decision making.

**Your degree is from an accredited institution.** CCU is accredited by the Higher Learning Commission of the North Central Association of Colleges and Schools.

## WHY LEARNING IS DIFFERENT AT CCU

CCU's personal approach to teaching and learning means you'll receive the finest education available in a small-class-size environment. Our faculty members bring scholarship and experience alive in the classroom, applying a wealth of academic and professional experience, and affording you the advantages of real-life perspectives while you learn.



*By gaining a greater understanding of people, graduates with a major in psychology are equipped for entry-level positions in business, education, the mental-health field, ministry, government agencies, and other areas where a psychology background is either required or enhances the individual's qualifications for employment.*

## OFFERED AT:

- Colorado Springs Center
- Denver Tech Center
- Lakewood Center
- Northglenn Center
- Global Enrollment Center
- Grand Junction Center
- Loveland Center

Contact an enrollment counselor at 303.963.3311 or visit our Web site at [www.ccu.edu/ags](http://www.ccu.edu/ags)

## Major Courses for a Bachelor of Science in Psychology

Please visit [www.ccu.edu/catalog](http://www.ccu.edu/catalog) for additional general-education or elective course requirements for this degree.

### PSY 101A General Psychology (3)

Provides an overview of the field of psychology, including psychological principles, methods, theories, and research ranging from the biological basis of behavior to social applications of psychology.

### PSY 201A Social Psychology (3)

Examines psychology literature regarding social cognition, obedience, conformity, gender, compliance, aggression, attraction, and person-situation interactions. Explores the prediction of human behavior in light of culture, group behaviors, prejudice, and stereotyping.

### PSY 221A Interpersonal Relationships (3)

Examines influencers of and principles for building and maintaining healthy relationships, including friendships, dating, marriage, and family. Explores the establishment of healthy boundaries, communication, and conflict management/resolution.

### PSY 231A Integration of Psychology and Theology (3)

Surveys principal models and how scientific findings can be integrated with biblical truths for a better understanding of human behavior, experience, and relationships.

### PSY 245A Life-Span Psychology and Development (3)

Explores the development of the human being from prenatal through late adulthood, and various physical, cognitive, and socio-emotional issues attendant to the development of a person.

### PSY 301A Theories of Personality (3)

Examines both theoretical and contemporary experimental literature across nine perspectives of personality, including psychoanalytic/neoanalytic schools, biological psychology and neuroimaging, Gestalt psychology, behaviorism, cognitive psychology, existential perspectives, humanistic psychology, interactionism, and trait theories.

### PSY 302A Abnormal Psychology (3)

Focuses on the etiology, dynamics, symptoms, and treatment of common psychological disorders.

### PSY 330A Human Sexuality (3)

Examines the major developments in and the many issues surrounding human sexuality, and healthy and unhealthy sexual practices from a Christian worldview.

### PSY 365A Environmental Psychology (3)

Explores how built and natural settings influence mood and behavior, and how human behavior impacts various environments.

### PSY 401A History and Philosophy of Psychology (3)

Surveys the history and development of the systems, people, and forces that have shaped modern psychology, and examines current issues and how they developed into their modern forms.

### PSY 408A Research Methodology (3)

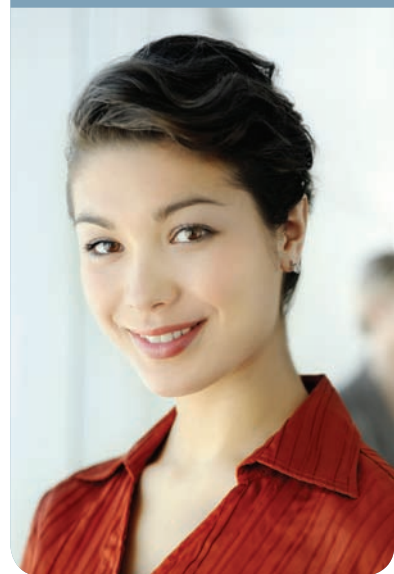
Discover how to assess and choose researchable topics, gather pertinent literature for review, design protocol for experiments and surveys, conduct research, and report findings in American Psychological Association format.

### PSY 485A Psychology Senior Seminar (3)

Investigates post-graduation professional pathways, presents information and skills to support exploration, and unifies and broadens the understanding of psychology as it is applied to current social issues and concerns.

## DEGREE QUICK FACTS:

- **120 Credit Hours**
  - 51 Core General Education Requirements
  - 33 Electives
  - 36 Major
- Coursework can be completed online
- Prior learning credits may be applied from your prior life experiences
- Degree academically prepares graduates for application to the CCU Master of Arts in Counseling program







**THANK YOU FOR YOUR INTEREST IN CCU!**

**CENTRAL COLORADO REGION**

**DENVER TECH CENTER**

304 Inverness Way South, Suite 150  
Englewood, CO 80112  
Phone: 303.963.3030, Fax: 303.301.6030

**LAKWOOD CENTER**

200 S. Garland St.  
Lakewood, CO 80226  
Phone: 303.963.3300, Fax: 303.963.3301

**NORTHERN COLORADO REGION**

**LOVELAND CENTER**

3553 Clydesdale Parkway, Suite 300  
Loveland, CO 80538  
Phone: 970.669.8700, Fax: 303.301.8320

**NORTHGLENN CENTER**

10190 Bannock St., Suite 200  
Northglenn, CO 80260  
Phone: 303.963.3320, Fax: 303.963.3321

**STERLING CENTER**

100 College Ave.  
Sterling, CO 80751  
Phone: 970.521.6855, Fax: 970.522.5542

**SOUTHERN COLORADO REGION**

**COLORADO SPRINGS CENTER**

1125 Kelly Johnson Blvd., Suite 105  
Colorado Springs, CO 80920  
Phone: 719.867.5800, Fax: 719.867.5820

**PETERSON AFB**

Phone: 719.867.5800

**SCHRIEVER AFB**

Phone: 719.867.5800

**U.S. AIR FORCE ACADEMY**

Phone: 719.867.5800

**WESTERN COLORADO REGION**

**GRAND JUNCTION CENTER**

2452 Patterson Rd., Suite 200  
Grand Junction, CO 81505  
Phone: 970.242.1811, Fax: 970.242.7092

**GLOBAL ONLINE**

**GLOBAL ENROLLMENT CENTER**

10190 Bannock St.  
Northglenn, CO 80260  
Phone: 303.963.3320

For more information about how Colorado Christian University can give rise to your educational dreams, visit [www.ccu.edu](http://www.ccu.edu) or contact an enrollment counselor at 303.963.3311

---

Colorado Christian  
**UNIVERSITY**

College of Adult and Graduate Studies

8787 W. Alameda Ave.  
Lakewood, CO 80226